

OWNER'S MANUAL

Maintenance & Assembly Instructions

IMPORTANT: KEEP THIS MANUAL FOR FUTURE REFERENCE



NOTICE

It is the Purchaser's/Owner's obligation:

1. To disclose and post all Rules & Regulations, Danger, Warning and Caution labels affixed on the machine to their customers/users.
2. Equipment to be installed by TuffStuff Authorized Dealer or a service company approved by TuffStuff.
3. Provide trained personnel, supervision and correct usage of the equipment.
4. Provide scheduled inspection, maintenance & repairs and must be performed by TuffStuff Authorized Dealer or a service company approved by TuffStuff.
5. Must use only genuine TuffStuff replacement parts.
6. **▲ WARNING** Machine must be anchored to a solid and level surface.

TUFFSTUFF
FITNESS

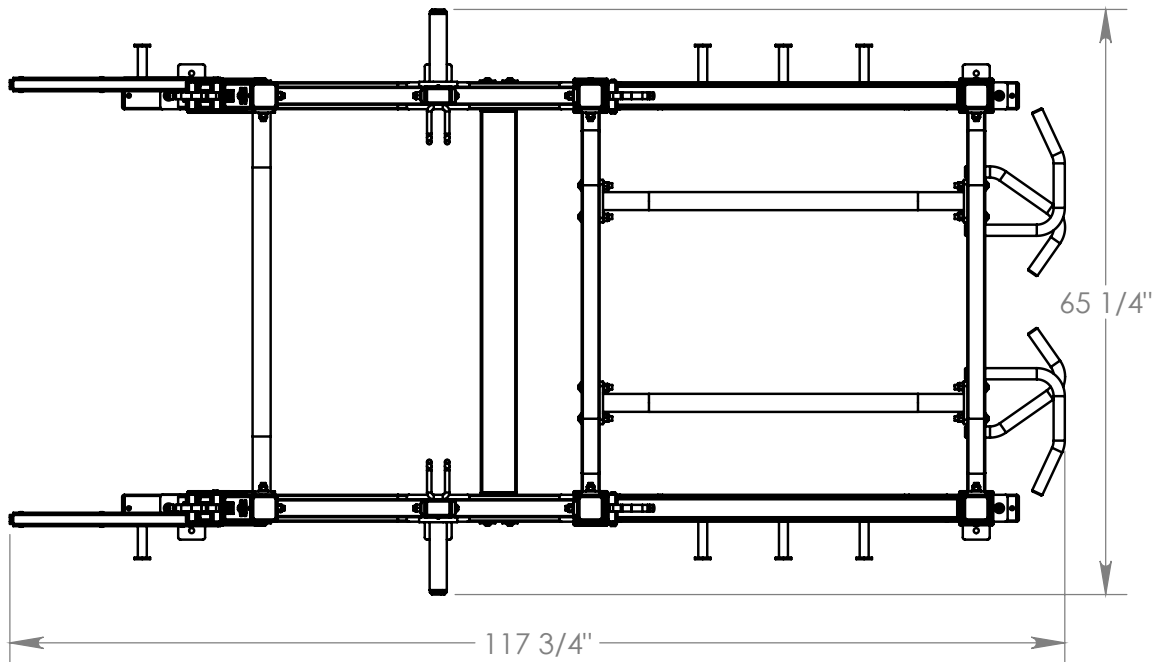
PXLS-7950

Super Rack (Power Rack + Half Rack)

Table of Contents



DANGER, WARNING, & CAUTION Labels Information.....	Pages 3-6
Anchoring Unit.....	Page 7
Important Safety Instructions.....	Page 8
Registration, Service & Assembly	Page 9
Inspection / Maintenance	Page 10
Assembly Step 1.....	Page 11
Assembly Step 2.....	Page 12
Assembly Step 3.....	Page 13
Assembly Step 4.....	Page 14
Assembly Step 5.....	Page 15
Assembly Step 6.....	Page 16
Assembly Step 7.....	Page 17
Assembly Step 8.....	Page 18
Assembly Step 9.....	Page 19
Exploded View Diagram.....	Page 20-21
Parts List.....	Page 22-23
WARRANTY	Page 24



L 117 3/4" x W 65 1/4" x H 97 1/4"

TuffStuff Fitness Equipment Inc. continually engages in research related to product improvements. Please take the time to carefully read through this manual thoroughly. Instructions contained in this manual are not intended to cover all details or variations possible with this equipment, or to cover every contingency that may be met in conjunction with assembly, installation, operation, maintenance or troubleshooting of the equipment. Even though we have prepared this manual with extreme care, neither the manufacturer nor the author can accept responsibility for any errors in, or omission from, the information given. Should additional information be required, or should situations arise that are not covered by this manual, the matter should be directed to Customer Service at TuffStuff Fitness Equipment Inc. in Chino, California.

Carefully read ALL Danger, Warning & Caution labels posted on the machine

64

! DANGER

Use this equipment **ONLY** for its intended purpose. If you are unfamiliar with the equipment or procedure, refer to your Owner's Manual or call TuffStuff at 888-884-8275.

Failure to comply could result in serious injury or death.
BNH2903

63

! DANGER

SAFETY SPOTTER must be adjusted to the same height on both sides and set to your range of motion for lowering.

Failure to do so could result in serious injury or death.
BNH3018

62

! DANGER

Must use **SPOTTERS/HELPERS** to assist you with this equipment. Failure to do so could result in serious injury or even death.
BNH2905

73

! WARNING

MAXIMUM WEIGHT LOAD
900 lbs.

DO NOT exceed the maximum weight capacity. Failure to comply could result in serious injury or death.
BNH3020

61

! WARNING

Serious injury or death can occur if these rules and precautions are not observed:

1. **Read and Understand** Owner's Manual (if available) and all DANGER, WARNING and CAUTION labels before using this equipment. If you still need help, seek assistance from floor personnel.
2. Obtain a **medical exam** before beginning any exercise program.
3. **Stop exercising** if you feel faint or dizzy. Consult a physician if you are experiencing pain.
4. **Inspect equipment** prior to use for wear and tear, loose fittings, worn or frayed cables/belts and frame welds. Do not use if it appears damaged or inoperable.
5. **Do not attempt to fix** or free any jammed parts by yourself. Seek assistance from floor personnel.
6. **Use this equipment only for the intended use** and for exercise(s) shown in the exercise label.
7. Keep body, clothing and hair **clear from all moving parts**.
8. **Children must not be allowed** near this machine. Teenager must be supervised.
9. **Make sure the selector pin** is completely inserted. Use only the selector pin provided by the manufacturer. If difficulty inserting the pin, seek assistance from floor personnel.
10. **Never pin the weights in an elevated position.** Do not use the machine if found in this condition. Inform floor personnel immediately.
11. **Do not modify selectorized weight stack** with any add-on incremental weights or dumbbells, except those with standard factory installed.
12. **Do not remove labels** affixed to the machine. Replace if damaged.

TuffStuff Fitness Equipment Inc.
Chino, CA 91710, USA
BNH2939

67

WARRANTY

COMMERCIAL

TEN (10) YEARS:

- Frames, welds, cams and weight plates

FIVE (5) YEARS:

- Pivot bearings, pulleys, bushings, gas shocks and guide rods

ONE (1) YEAR:

- Belts, linear bearings and pull-pin components

ALL OTHER PARTS not mentioned, one year from the date of delivery to the original purchaser.

SIX (6) MONTHS:

- Upholstery, cables, finish and rubber grips

The warranty set forth herein are conditioned upon proper storage, installation, use and maintenance.

All warranty periods begin to run from the date of delivery to the original purchaser. The obligation of TuffStuff under this warranty is limited to repairing or replacing warranted defective parts, as TuffStuff may elect, at TuffStuff's facility in Chino, California, without charge to the Purchaser for either parts or labor. Purchaser is responsible for installation of repaired or replaced parts, and all transportation and insurance costs to and from TuffStuff's facility in Chino. For a detailed copy of the warranty, please contact:

TuffStuff Fitness Equipment Inc.
Chino, CA 91710, USA
www.tuffstufffitness.com
BNH2927



69

66

INSPECTIONS

Recommended Inspection	DAILY	WEEKLY	MONTHLY	6-MONTH
Replace all parts at first signs of wear or damage.				
INSPECT: Links, pull-pins, snap locks, swivels, connectors, selector pin, welded-joints		X		
INSPECT: All decals			X	
CLEAN: Upholstery with lanolin-base cleaner		X		
INSPECT: All nuts and bolts (tighten if needed)			X	
INSPECT: Accessory bars, handles, rubber grips			X	
LUBRICATE: Seat sleeves, pull-pin sliding mechanism, bushings				X
CLEAN & WAX: All powder-coat finishes				X

Use only genuine TuffStuff replacement parts. Failure to do so will void warranty and could result in serious injury or death.

TuffStuff Fitness Equipment Inc.
13971 Norton Avenue
Chino, CA 91710, USA
BNH2915

70

TUFFSTUFF
SER# 000000

65

IMPORTANT

For smooth performance, lubricate all gliding surfaces with silicone spray lubricant.
BNH2916

57

SCHEDULE
Replacement Parts

Recommended TuffStuff Parts (replace or as needed)	12-MONTH	15-MONTH
Rubber Grips		X
Rubber U Channel BNH2794		X
Rubber U Channel BNH2795		X
Plastic Tube Guide (w/lip-teeth BNH2874)		X
Labels (as needed)		

Use only genuine TuffStuff parts. Failure to do so will void warranty and could result in personal injury. Warranty period on all parts are one (1) year from date of purchase.

TuffStuff Fitness Equipment Inc.
Chino, CA 91710, USA
BNH3013

Carefully read ALL Danger, Warning & Caution labels posted on the machine

56

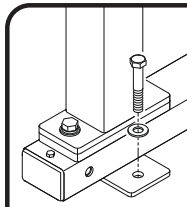


58

WARNING

ATTENTION USERS!
Make sure lockings pins are fully engaged and secured. BNH2152

71



WARNING

Anchor bolt
here to fasten the machine to the floor. BNH3016

59

WARNING

BAR CATCH ADJUSTMENT

PULL BAR CATCH TO RELEASE

Hold handle with one hand and lift up slightly, pull bar catch to release. Slide to your desired position before releasing bar catch and make sure it is securely locked in position. BNH2958

60

WARNING

BAR CATCH ADJUSTMENT

PULL BAR CATCH TO RELEASE

Hold Handle with one hand and lift up slightly, pull bar catch to release. Slide to your desired position before releasing bar catch and make sure it is securely locked in position. BNH2959

53



72

WARNING

ATTENTION USERS!
DO NOT use Safety Spotter for racking the bar. Always use the bar catch. BNH3019

54

WARNING

SAFETY SPOTTER ADJUSTMENT

Release Handle

Disengage position as shown

Hold handle with one hand and lift up release handle to disengage. Slide to your desired position before releasing handle and make sure it is securely locked in position. BNH3011

55

WARNING

SAFETY SPOTTER ADJUSTMENT

Release Handle

Disengage position as shown

Hold handle with one hand and lift up release handle to disengage. Slide to your desired position before releasing handle and make sure it is securely locked in position. BNH3012

68

BE ALERT!

THE FITNESS EQUIPMENT IN THIS FACILITY PRESENTS HAZARDS WHICH, IF NOT AVOIDED, COULD CAUSE SERIOUS INJURY OR DEATH.

Prior to using the equipment, READ the warning labels and instruction placards affixed to each machine.

If you are unsure on how to use a machine, seek the assistance of our floor personnel. We will be happy to instruct you on how to use the equipment properly.

Immediately report any piece of equipment that is not functioning properly to our floor personnel so that it may be evaluated and service promptly.

DO NOT ATTEMPT to use or fix any piece of equipment that is not functioning properly.

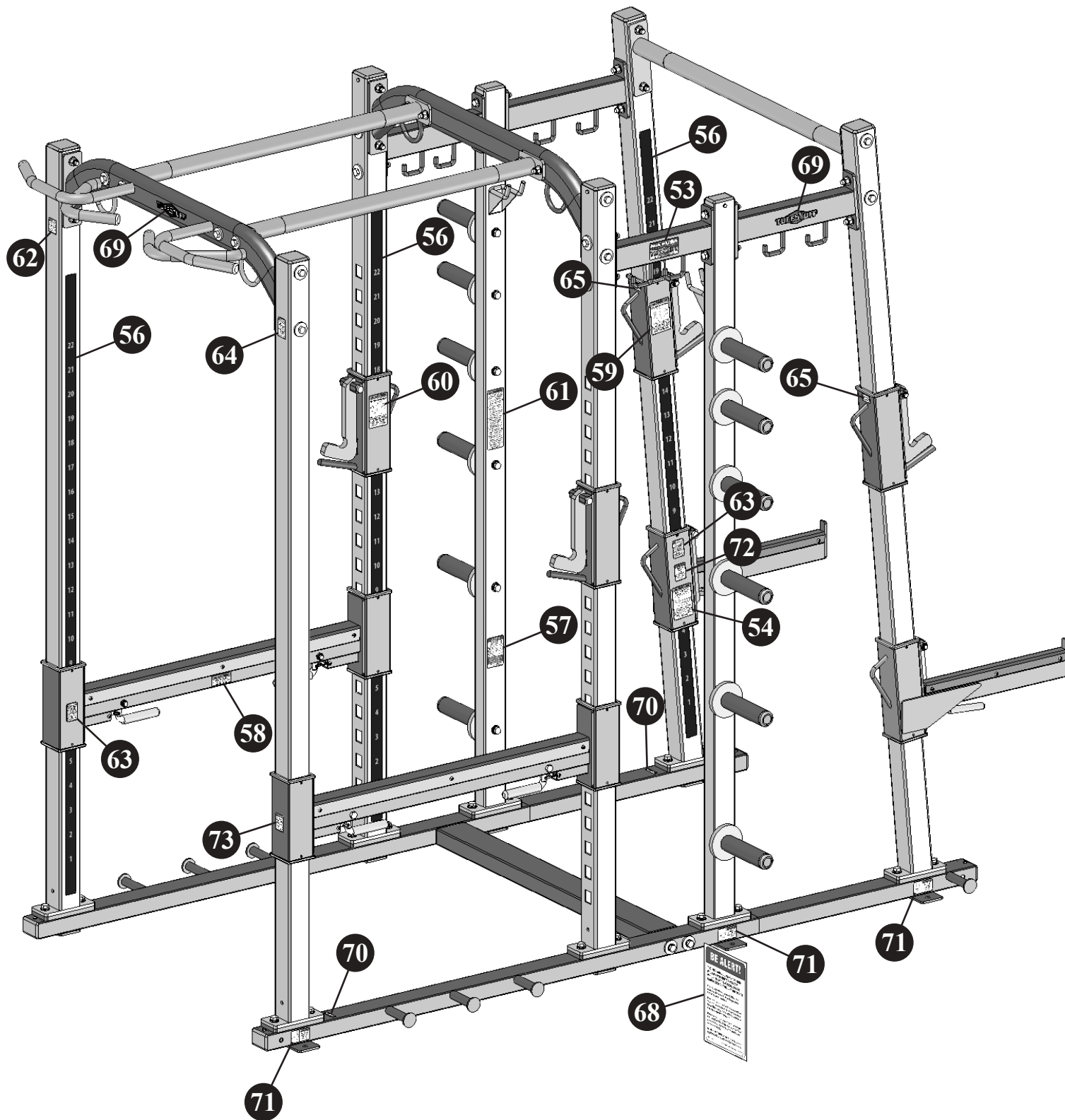
ASTM F1749-96 TUFFSTUFF FITNESS EQUIPMENT INC. CHINO, CA 91710 BNH3002

It is extremely important that the **Facility Sign** shown to the left be installed in plain view of the unit.

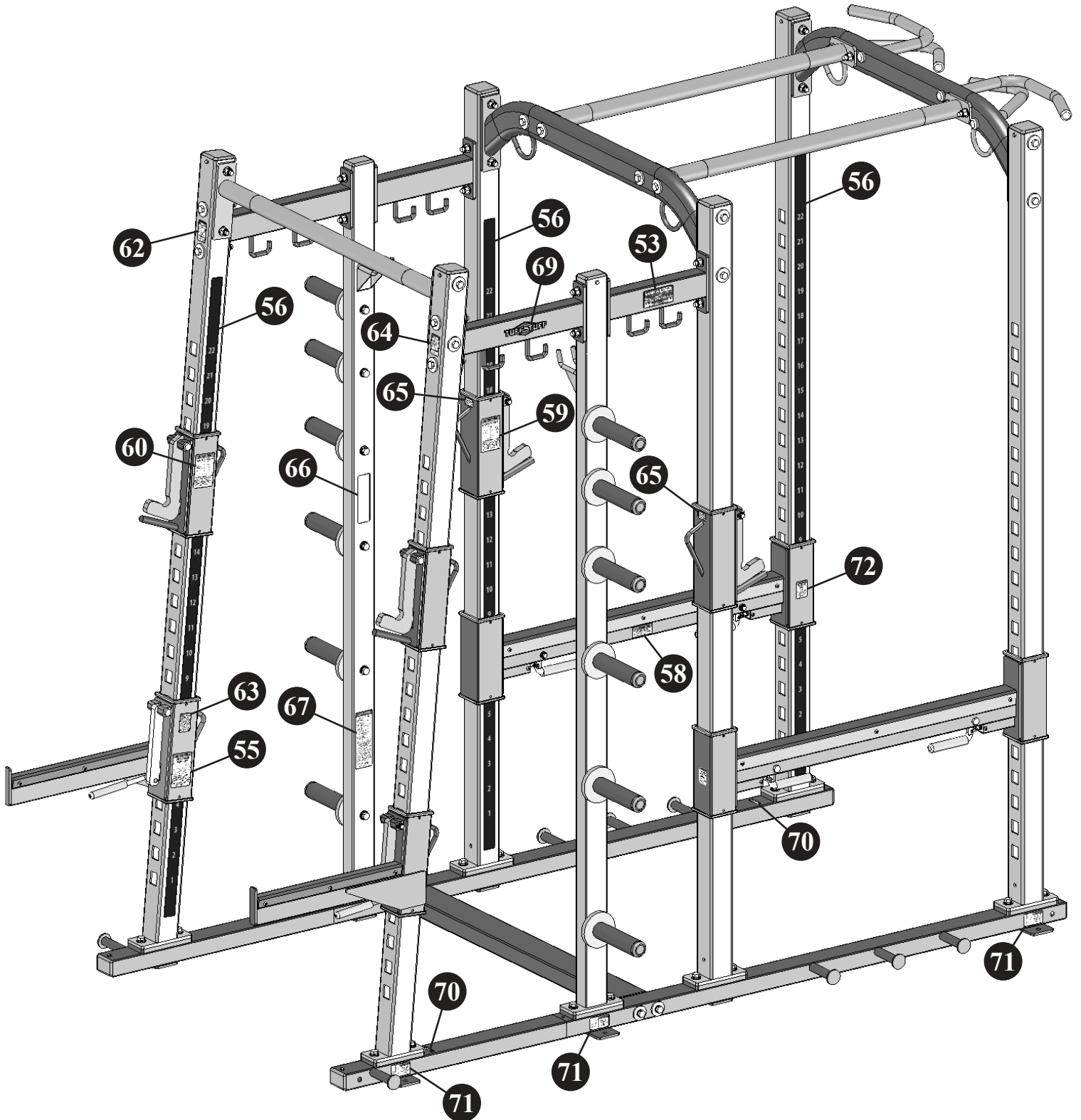
You should have received it along with this Owners Manual. If you did not receive this Facility Sign with your order, you can obtain one at no cost to you from TuffStuff Fitness by contacting our service department at:

1 (888) 884-8275
service@tuffstuff.net
service1@tuffstuff.net

Carefully read ALL Danger, Warning & Caution labels posted on the machine



Carefully read ALL Danger, Warning & Caution labels posted on the machine

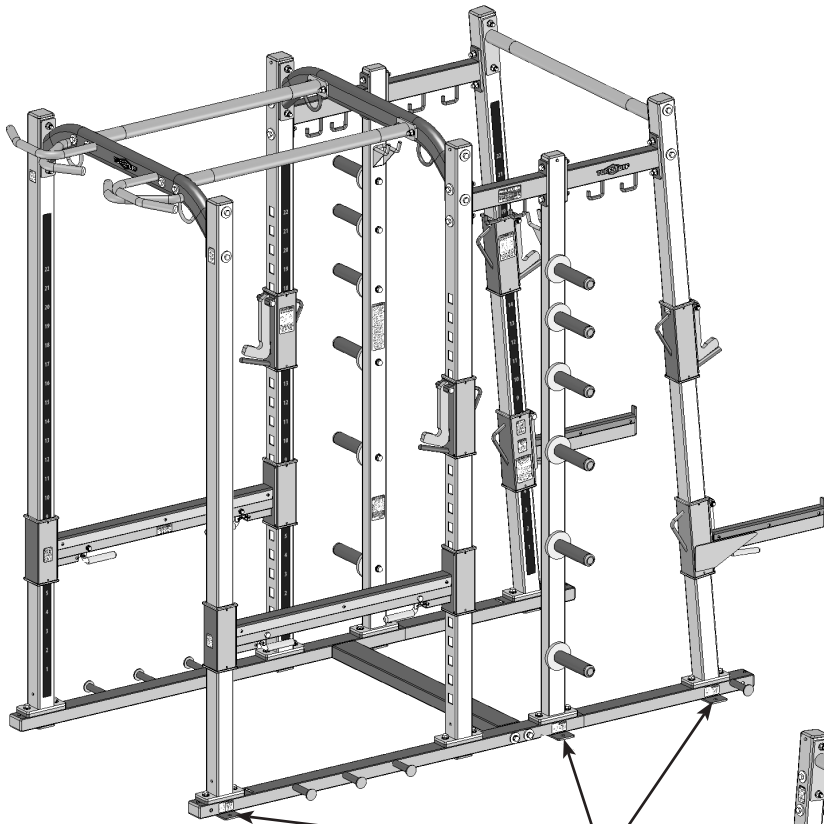


Anchoring Unit

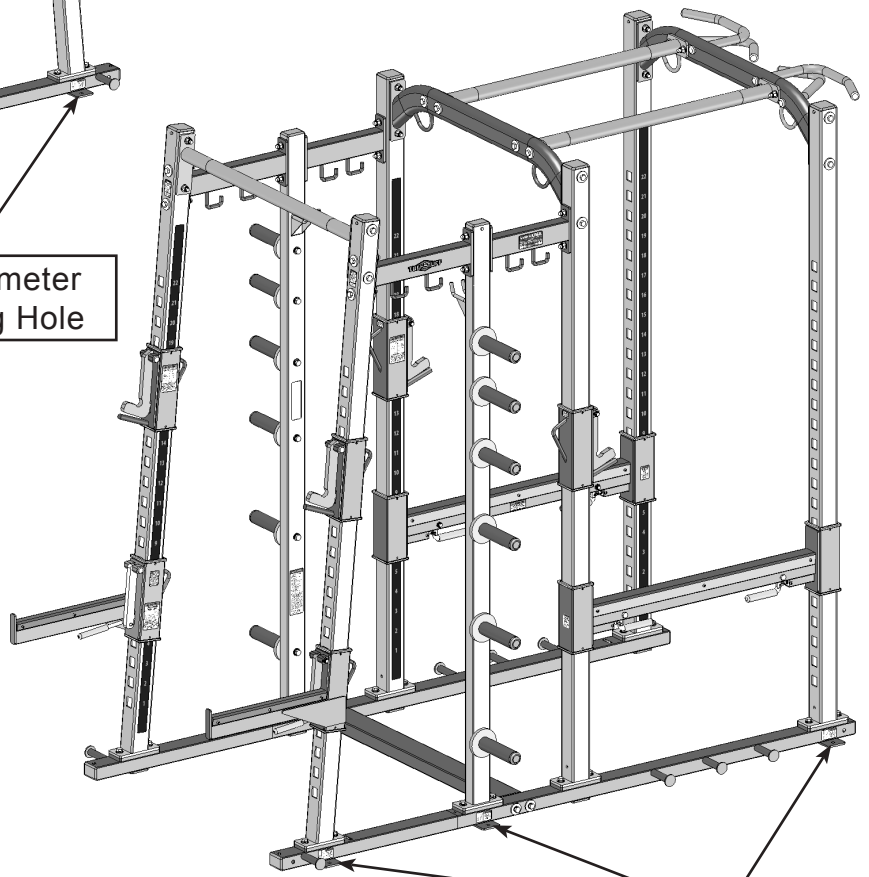


⚠ WARNING Anchoring of equipment must be completed at time of installation and inspected prior to use. Failure to anchor the machine to the floor could cause the machine to tip or fall over due to incorrect usage and misuse, and could result in serious injury or death.

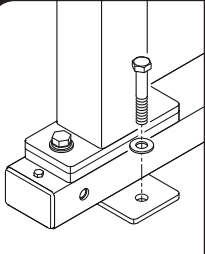
Holes on footplates are provided for anchoring the unit to the floor. (See anchoring hole locations below)



9/16" Diameter Anchoring Hole



9/16" Diameter Anchoring Hole



⚠ WARNING
Anchor bolt here to fasten the machine to the floor.
BNH3016

Important Safety Instructions




It is the responsibility of the facility owner and/or owner of the equipment to review the Owner's Manual with their facility personnel and understand all Danger, Warning and Caution labels affixed on the machine. It is the responsibility of the floor personnel to instruct users on proper operation of the equipment and review all danger, warning and caution labels.

WARNING SERIOUS INJURY OR DEATH CAN OCCUR IF THESE SAFETY PRECAUTIONS ARE NOT OBSERVED:

1. Obtain a medical exam before beginning any exercise program.
2. Read and understand Owner's Manual and all **Danger, Warning and Caution** labels before using this equipment. If you still need help, seek assistance from floor personnel.
3. **Inspect the equipment** before each use for wear and tear, loose fittings, worn or frayed cables and frame welds. DO NOT USE if it appears to be inoperable or damaged.
4. Stop exercising if you feel faint or dizzy. Consult a physician if you are experiencing pain.
5. Keep body, clothing and hair clear from all moving parts. Do not attempt to free any jammed parts by yourself.
6. Always warm-up before and cool-down after weight training. Warm-up for 10-15 minutes with stretching and cardiovascular exercises. Cool-down should include light stretching exercises for 5-15 minutes.
7. Never hold your breath – will limit the flow of oxygen to your brain and may cause dizziness. The most often used breathing pattern is inhaling during least resistance and exhaling during maximum resistance.
8. Do not use accessories or accessory attachments that are not recommended by TuffStuff.
9. Do not use the Safety Spotters for racking the bar. Always use the Bar Catches.
10. Make sure adjustment pull-pins and Swing Lock J-Hooks are completely inserted and fully engaged before each use.
5. Provide an adequate safety perimeter between the machine, walls and other equipment to ensure that the facility has proper clearance for usage and training.
6. Post and disclose all safety, rules and regulations on a bulletin board easily accessible to users.
7. Perform regular maintenance (see Inspection Label). Pay special attention to areas most susceptible to wear and tear.
8. **Do not** lean against or pull on the framework, weight stack or any component at all times.
9. **Children must not** be allowed near the equipment. Teenager must be supervised.
10. Replace immediately all parts at first sign of wear or damage. If unable to replace worn or damaged components/parts, remove machine from service until the repair is made.
11. Use only genuine TuffStuff replacement parts. Failure to do so will void warranty and could result in serious injury or death to the users.
12. **Do not remove** any LABELS affixed to the machine. Replace if damaged.
13. Maintain a service contract with a TuffStuff Authorized Dealer or a Professional Service Company approved by TuffStuff. Keep a service log of all maintenance and repair activities. **NOTICE:** It is the sole responsibility of the owner or facility operator to ensure that regular maintenance is performed.

Facility Safety Guidelines and Practices

1. Read and understand the Owner's Manual before assembling, servicing or using the equipment.
2. Equipment to be installed by TuffStuff Authorized Dealer or Professional Service Company approved by TuffStuff.
3. Make sure each machine is set up and operated on a solid level surface. Do not install equipment on an uneven surface.
4. **Anchoring of equipment must be completed** at time of installation and inspected prior to use. Failure to anchor the machine to the floor could cause the machine to tip or fall over due to incorrect usage and misuse, and could result in serious injury or death.

 **WARNING** MAXIMUM WEIGHT LOAD 900 LBS. DO NOT exceed the maximum weight capacity. Failure to comply could result in serious injury or death.



DANGER: indicates an imminently hazardous situation which, if not avoided, will result in death or serious injury.



WARNING: indicates a potentially hazardous situation which, if not avoided, will result in death or serious injury.



CAUTION: indicates a hazardous situation which, if not avoided, could result in minor or moderate injury.

Thank you for purchasing the **PXLS-7950 Super Rack (Power Rack + Half Rack)**. This machine is part of the TuffStuff line of quality strength training equipment. To maximize your use of the equipment, please study the **Owner's Manual** thoroughly.

Registration

To avoid unnecessary delays on warranty parts and to insure that a permanent record of your purchase is on file with our company, be sure to register online at www.tuffstufffitness.com within 10 days of purchase.

Obtaining Service

Please use this Owner's Manual as your guide to all parts included in your shipment. When ordering parts, you must specify the part number and description from this manual. **Use only genuine TuffStuff replacement parts when servicing the equipment.** Failure to do so will void warranty and could result in serious injury or death.

For information about product operation or service:

Phone: 909-629-1600 Toll Free 888-884-8275
Fax: 909-629-4967
E-mail: service@tuffstuff.net or service1@tuffstuff.net
Hours: M-F 8:00 – 4:30 PST
Or write to: TuffStuff Fitness Equipment Inc.
Customer Service
13971 Norton Avenue, Chino, CA 91710

Retain this Owner's Manual for future reference when ordering service or parts. To assist you better, please be prepared to provide the following information:

1. Model Number
2. Place of Purchase
3. Serial Number
4. Part # and Description

Required Tools

The basic tools that you will need to assemble the PXLS-7950 but are not limited to:

- 7/16", 3/4" Combination Wrenches
- Ratchet Wrench with 7/16", 3/4" sockets
- Two Strong Step Ladders
- Rubber mallet, measuring tape & utility knife
- Windex or household glass cleaner

Assembly Requirements

Follow these installation requirements when assembling the PXLS-7950. Use the overhead view on the Content Page to layout your floor plan before assembling.

Set up the PXLS-7950 on a clean, solid, flat surface. A smooth, flat surface under the machine helps keep it level.

Allow ample space around the machine for safe unrestricted use and easier access.

Insert all bolts in the same direction. For aesthetic appearance, insert all bolts in the same direction unless specified (in text or illustration) to do otherwise.

Leave room for adjustments. Do not fully tighten fasteners until instructed in the assembly steps to do so (to prevent any difficulty with alignment of parts during the assembly process). When not instructed, tighten fasteners such as bolts, nuts and screws so the unit is stable, but leave room for adjustments.

Assembly Tips

Read all "Notes" on each page before beginning each step.

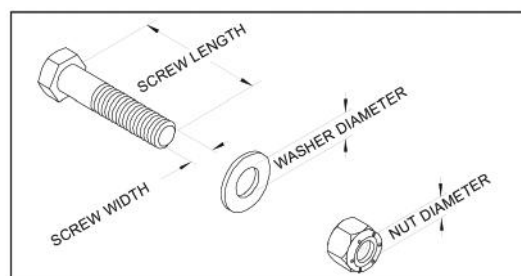
While you may be able to assemble the PXLS-7950 using the illustrations only, **IMPORTANT** safety notes and other tips are included in the text.

Some pieces may have extra holes that you will not use. Use only those holes indicated in the instructions and illustration.

NOTE: With so many assembled parts, proper alignment and adjustment is critical. While tightening the nuts and bolts, be sure to leave room for final adjustments.

CAUTION: Obtain assistance from TuffStuff if you have difficulty assembling the PXLS-7950. Please do not attempt to complete the assembly as this could result in equipment failure and serious injuries to the users.

Symbols & Description



Loosely Fasten

Finger tighten all hardware in this step. **DO NOT** wrench tighten. Some component(s) may need pre-assembly and alignment during the assembly process.



Fully Fasten

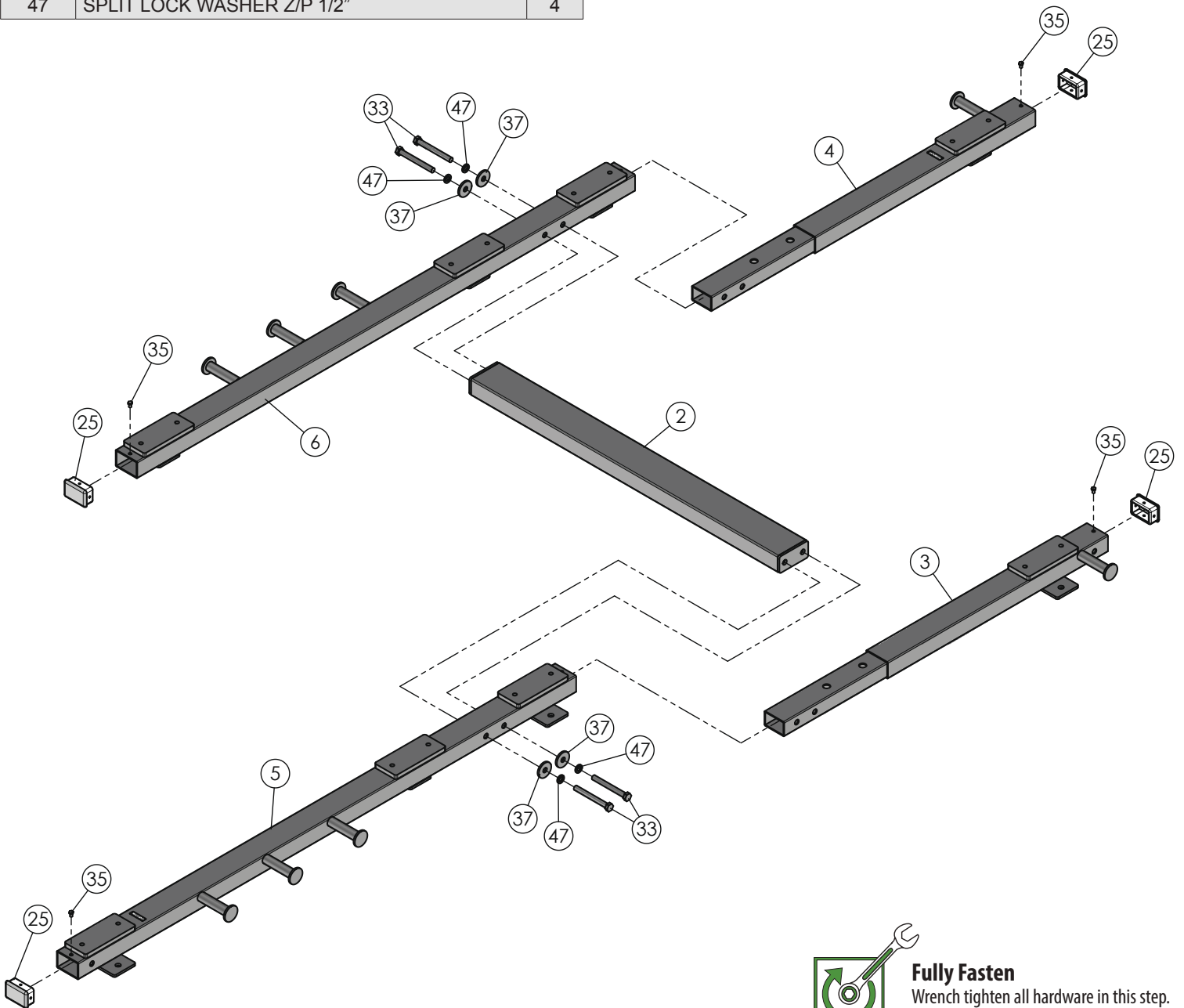
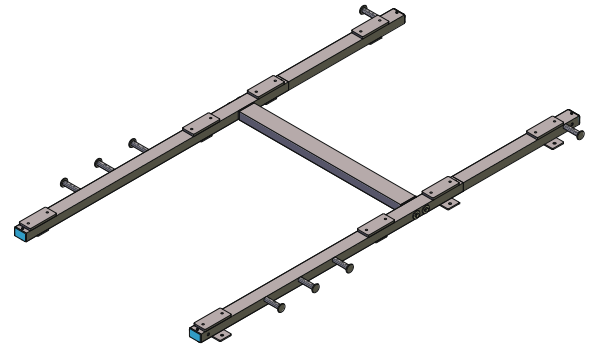
Wrench tighten all hardware in this step.

Assembly Step 1



Step 1 Assembly List		
Item #	Description	Qty.
2	BOTTOM CONNECTOR 43"	1
3	BOTTOM SIDE FRAME 44 3/4" LT	1
4	BOTTOM SIDE FRAME 44 3/4" RT	1
5	BOTTOM SIDE FRAME 69" LT	1
6	BOTTOM SIDE FRAME 69" RT	1
25	ALUMINUM INSERT CAP 2 X 3	4
33	HEX HEAD CAP SCREW GR-5 Z/P 1/2-13 X 4 1/2	4
35	HEX HEAD CAP SCREW GR-5 Z/P 1/4-20 X 3/8	4
37	FLAT WASHER Z/P 1/2 X 1 3/4 X 3/16	4
47	SPLIT LOCK WASHER Z/P 1/2"	4

Step 1 Assembled View



Fully Fasten
Wrench tighten all hardware in this step.

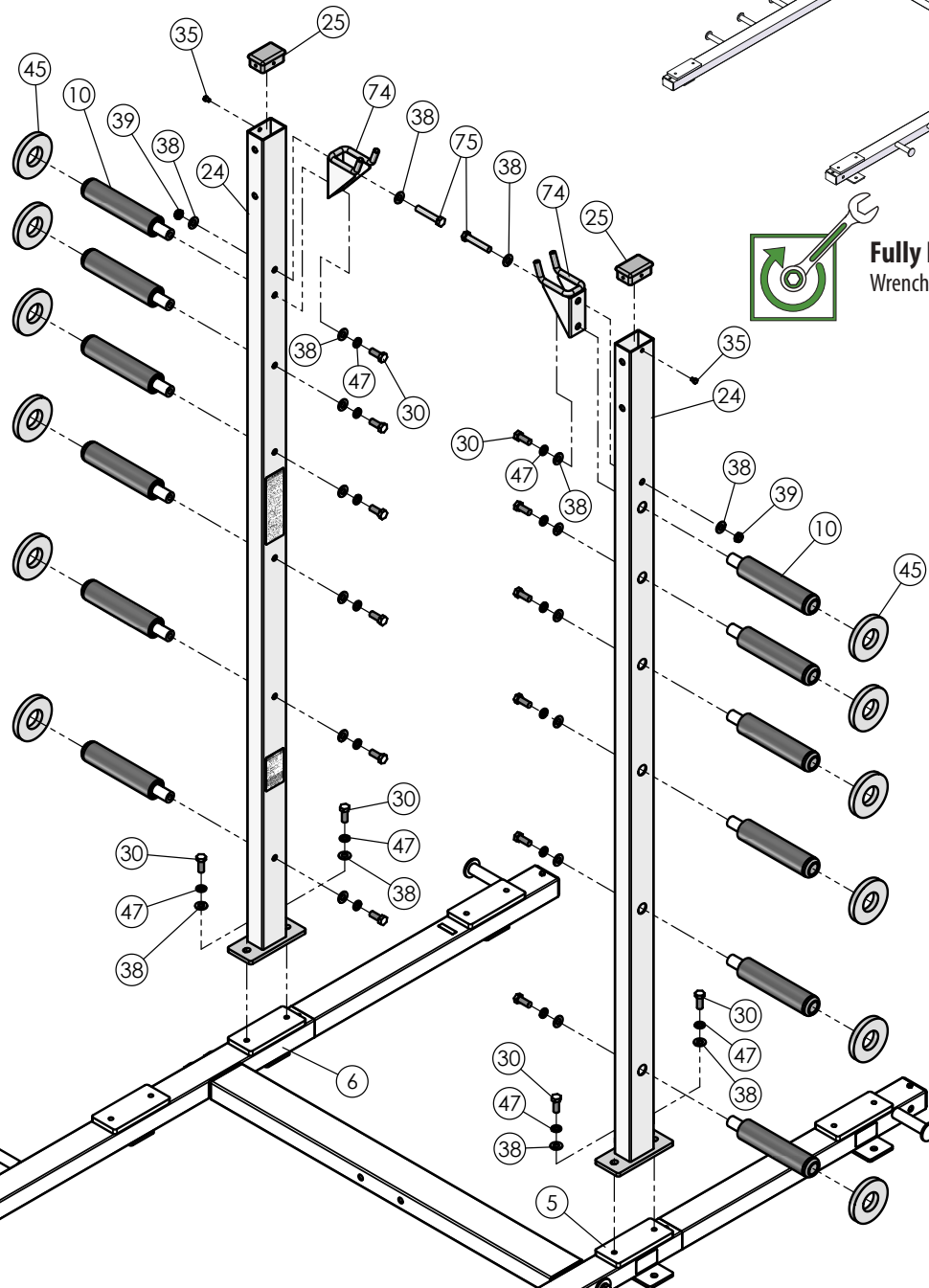
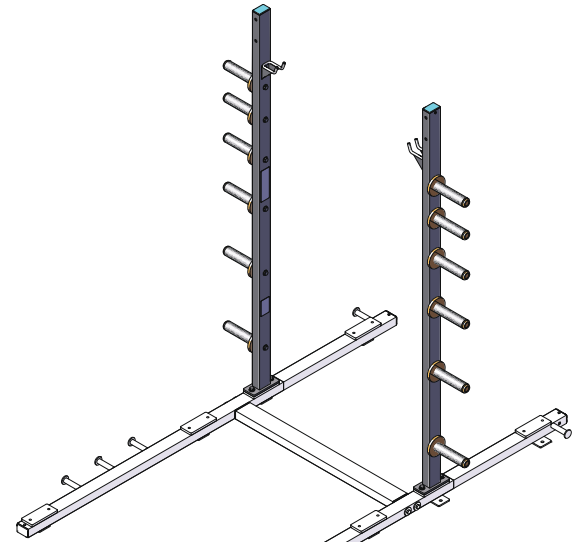
⚠ WARNING IT IS RECOMMENDED TO HAVE ANOTHER PERSON ASSIST YOU WITH THE INSTALLATION OF THIS UNIT.

Assembly Step 2



Step 2 Assembly List		
Item #	Description	Qty.
10	OLYMPIC ADAPTER 1 X 8 (1 3/4 AXLE)	12
24	UPRIGHT, WEIGHT HOLDER	2
25	ALUMINUM INSERT CAP 2 X 3	2
30	HEX HEAD CAP SCREW GR-5 Z/P 1/2-13 X 1 1/4	16
35	HEX HEAD CAP SCREW GR-5 Z/P 1/4-20 X 3/8	2
38	FLAT WASHER SAE Z/P 1/2"	20
39	NYLON INSERT THIN LOCK NUT Z/P 1/2-13	2
45	RUBBER WASHER 1 7/8 ID X 4 1/4 OD X 9/16 TK	12
47	SPLIT LOCK WASHER Z/P 1/2"	16
74	OLYMPIC BAR STORAGE HOOK (Pxls)	2
75	HEX HEAD CAP SCREW GR-5 Z/P 1/2-13 X 2 3/4	2

Step 2 Assembled View

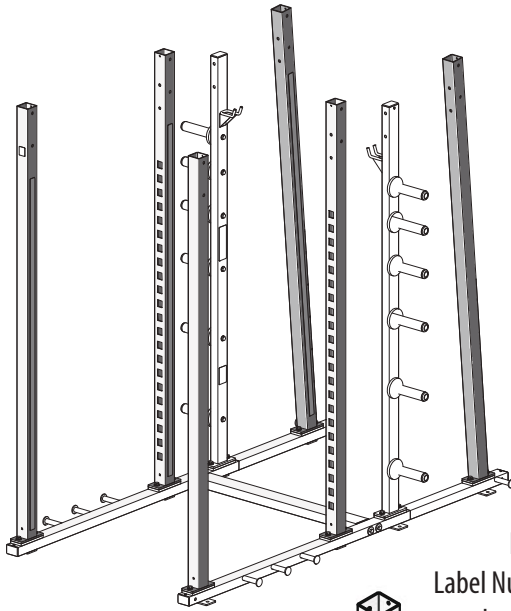


Fully Fasten

Wrench tighten all hardware in this step.

Assembly Step 3

Step 3 Assembled View

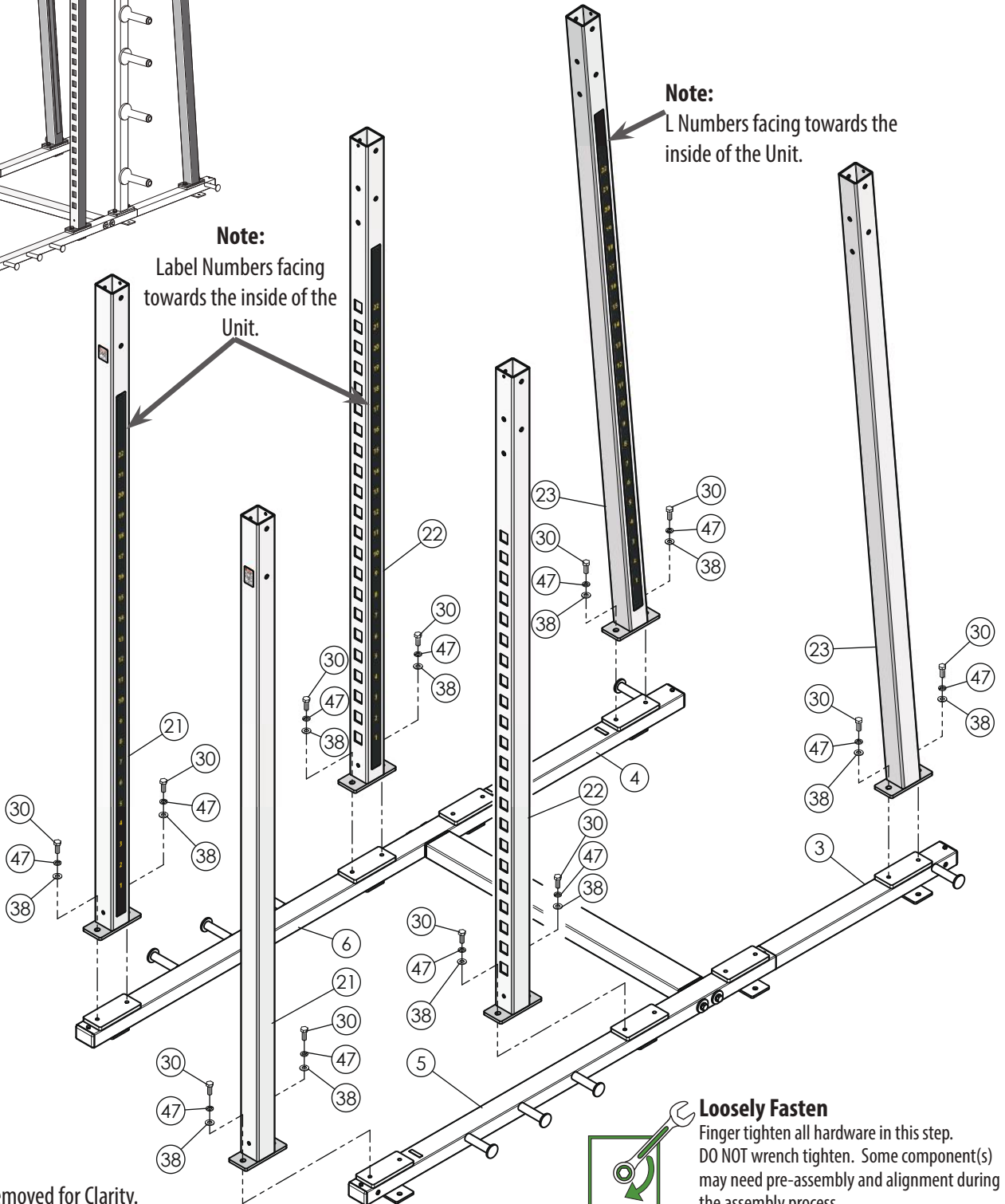


Step 3 Assembly List

Item #	Description	Qty.
21	UPRIGHT, FRONT	2
22	UPRIGHT, REAR	2
23	UPRIGHT, SLANTED 5 DEG	2
30	HEX HEAD CAP SCREW GR-5 Z/P 1/2-13 X 1 1/4	12
38	FLAT WASHER SAE Z/P 1/2"	12
47	SPLIT LOCK WASHER Z/P 1/2"	12

Note:
Label Numbers facing towards the inside of the Unit.

Note:
L Numbers facing towards the inside of the Unit.



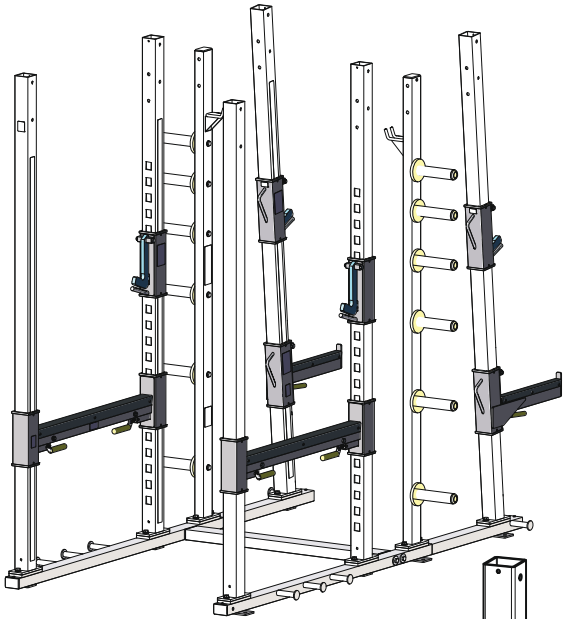
Note:
Some parts have been removed for Clarity.

Loosely Fasten
Finger tighten all hardware in this step. DO NOT wrench tighten. Some component(s) may need pre-assembly and alignment during the assembly process.

Assembly Step 4

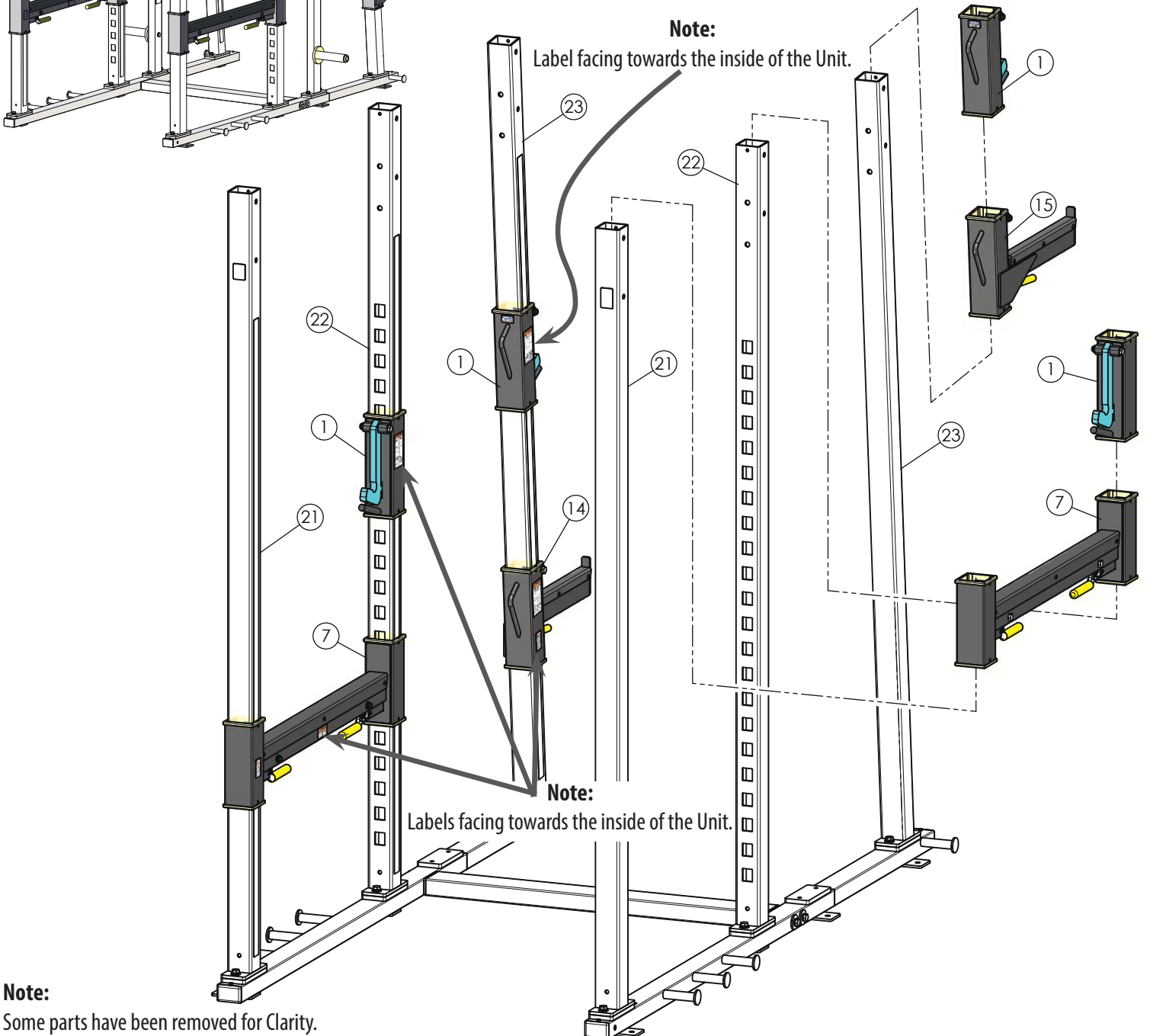


Step 4 Assembled View



Step 4 Assembly List

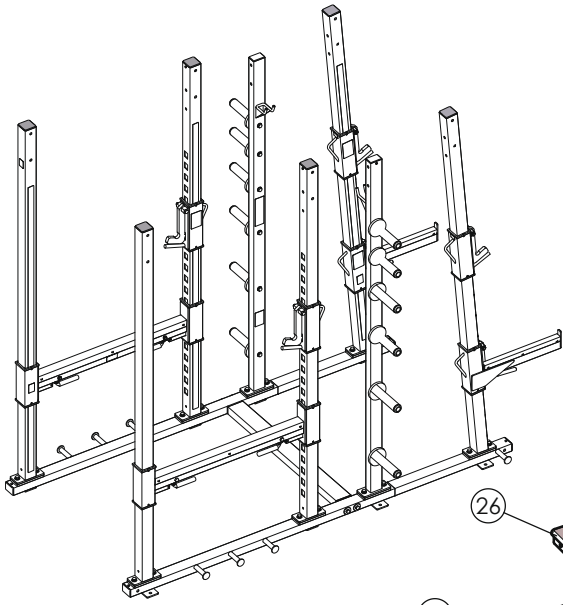
Item #	Description	Qty.
1	BAR-CATCH, SINGLE HOOK	4
7	SAFETY BAR SPOTTER 43"	2
14	SAFETY BAR SPOTTER LT	1
15	SAFETY BAR SPOTTER RT	1



Note:
Some parts have been removed for Clarity.

Assembly Step 5

Step 5 Assembled View

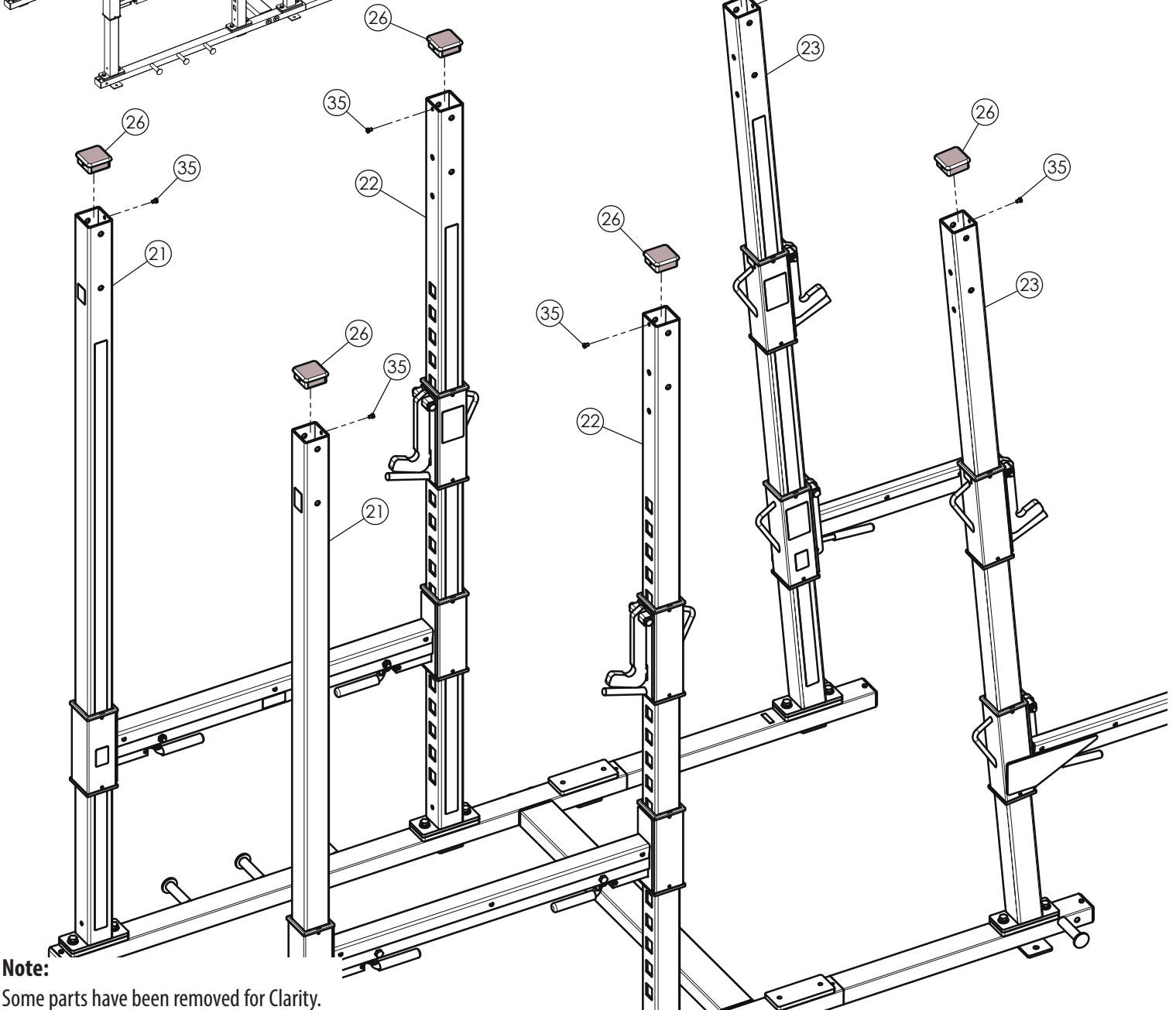


Step 5 Assembly List

Item #	Description	Qty.
26	ALUMINUM INSERT CAP 3 SQ X .188	6
35	HEX HEAD CAP SCREW GR-5 Z/P 1/4-20 X 3/8	6



Fully Fasten
Wrench tighten all hardware in this step.

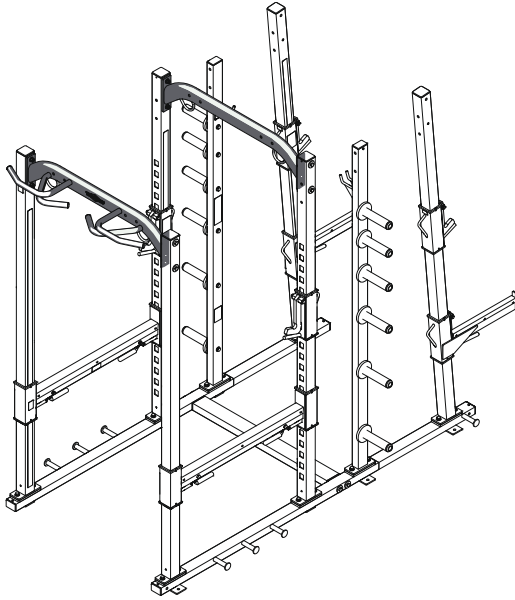


Note:
Some parts have been removed for clarity.

Assembly Step 6



Step 6 Assembled View



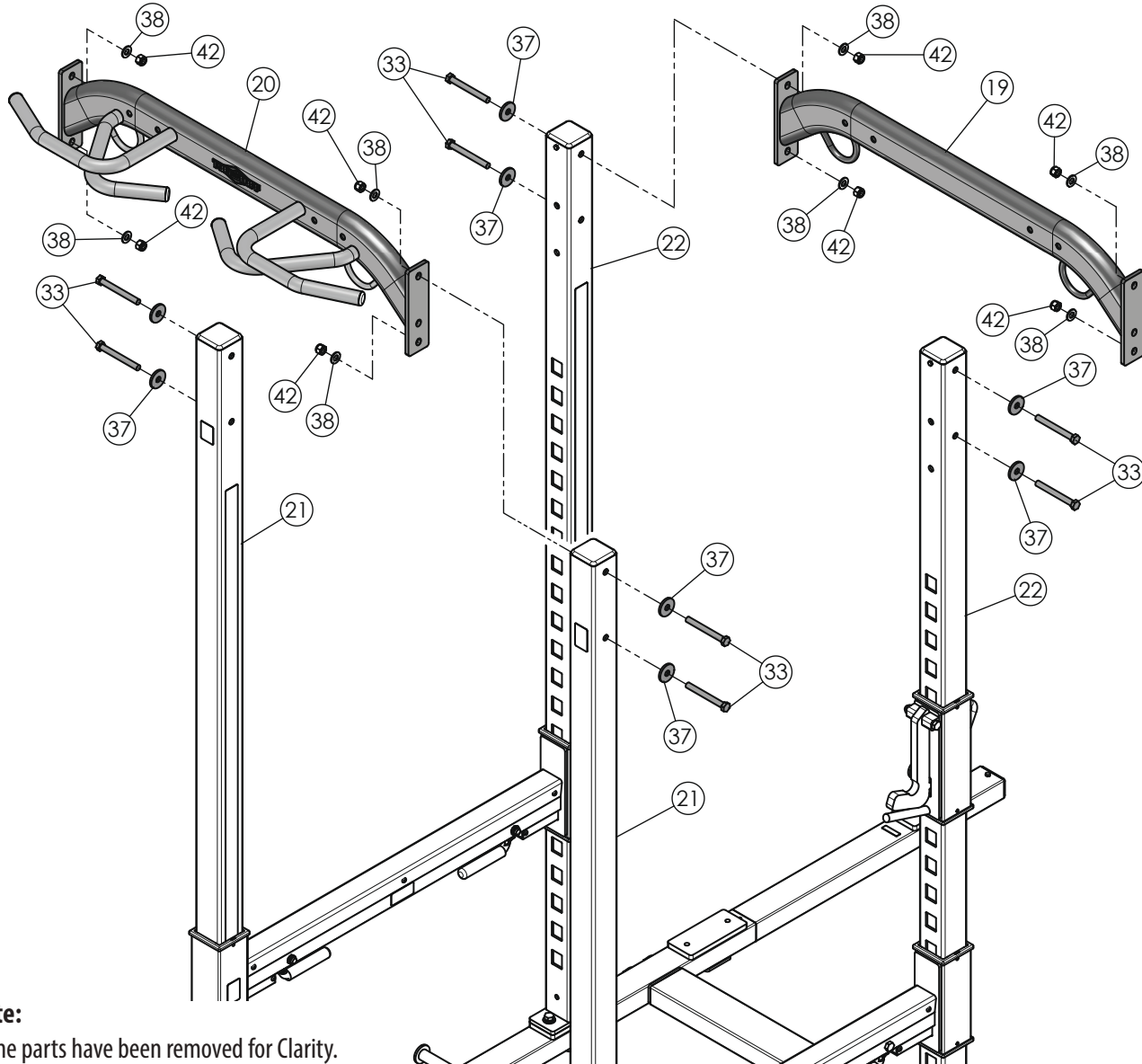
Step 6 Assembly List

Item #	Description	Qty.
19	TOP CROSS BRACE 43"	1
20	TOP CROSS BRACE 43" W/HANDLES	1
33	HEX HEAD CAP SCREW GR-5 Z/P 1/2-13 X 4 1/2	8
37	FLAT WASHER Z/P 1/2 X 1 3/4 X 3/16	8
38	FLAT WASHER SAE Z/P 1/2"	8
42	NYLON INSERT LOCK NUT Z/P 1/2-13	8



Fully Fasten

Wrench tighten all hardware in this step.

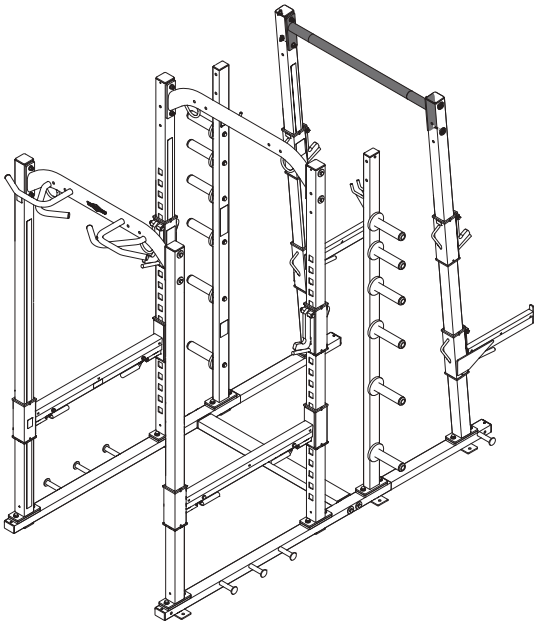


Note:

Some parts have been removed for clarity.

Assembly Step 7

Step 7 Assembled View



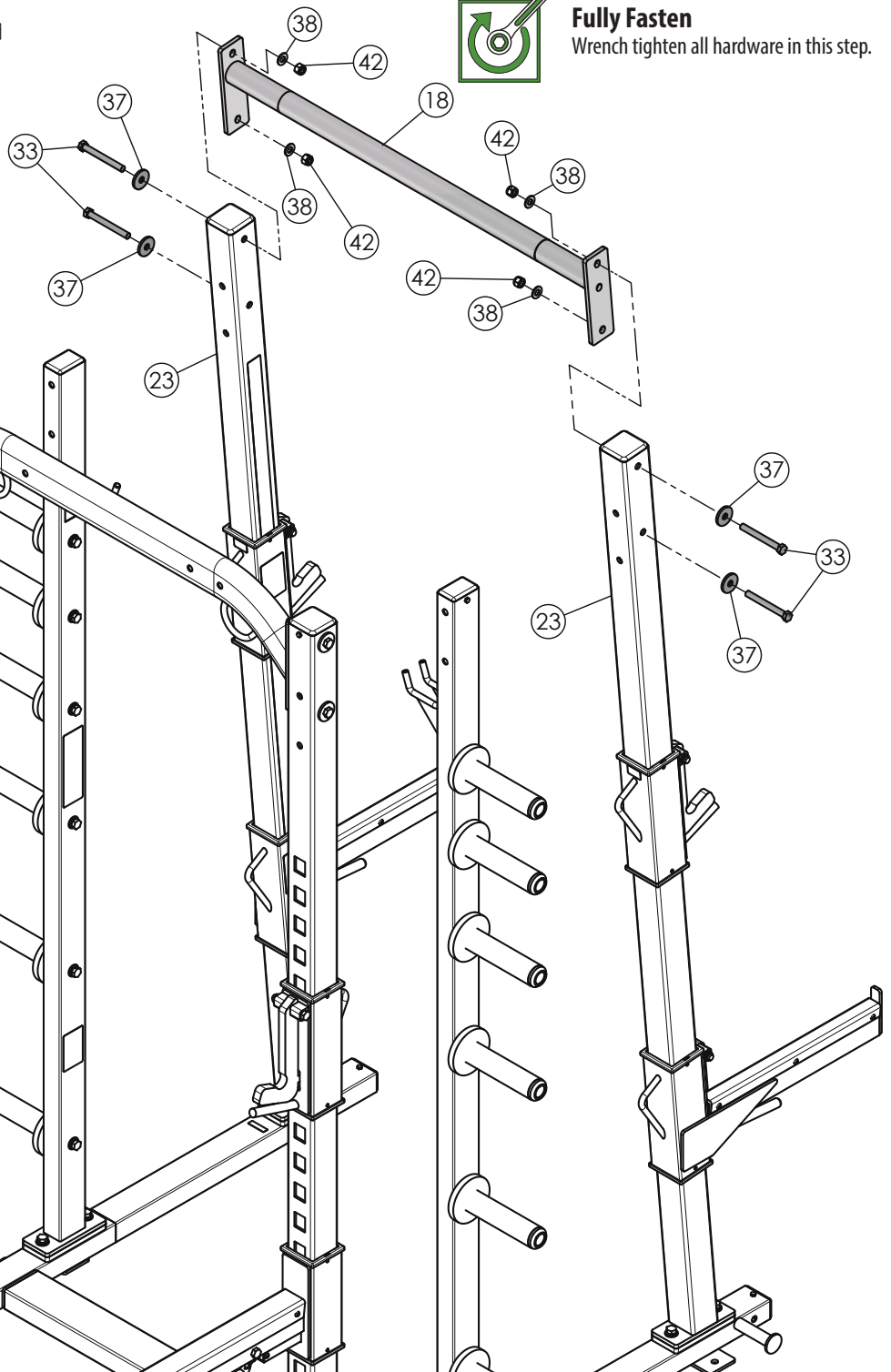
Step 7 Assembly List

Item #	Description	Qty.
18	TOP CHIN-UP BRACE 43" W/KNURLING	1
33	HEX HEAD CAP SCREW GR-5 Z/P 1/2-13 X 4 1/2	4
37	FLAT WASHER Z/P 1/2 X 1 3/4 X 3/16	4
38	FLAT WASHER SAE Z/P 1/2"	4
42	NYLON INSERT LOCK NUT Z/P 1/2-13	4



Fully Fasten

Wrench tighten all hardware in this step.



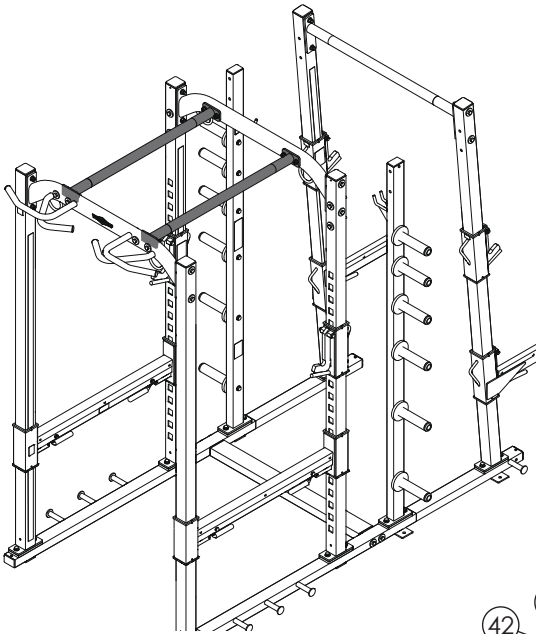
Note:

Some parts have been removed for clarity.

Assembly Step 8



Step 8 Assembled View



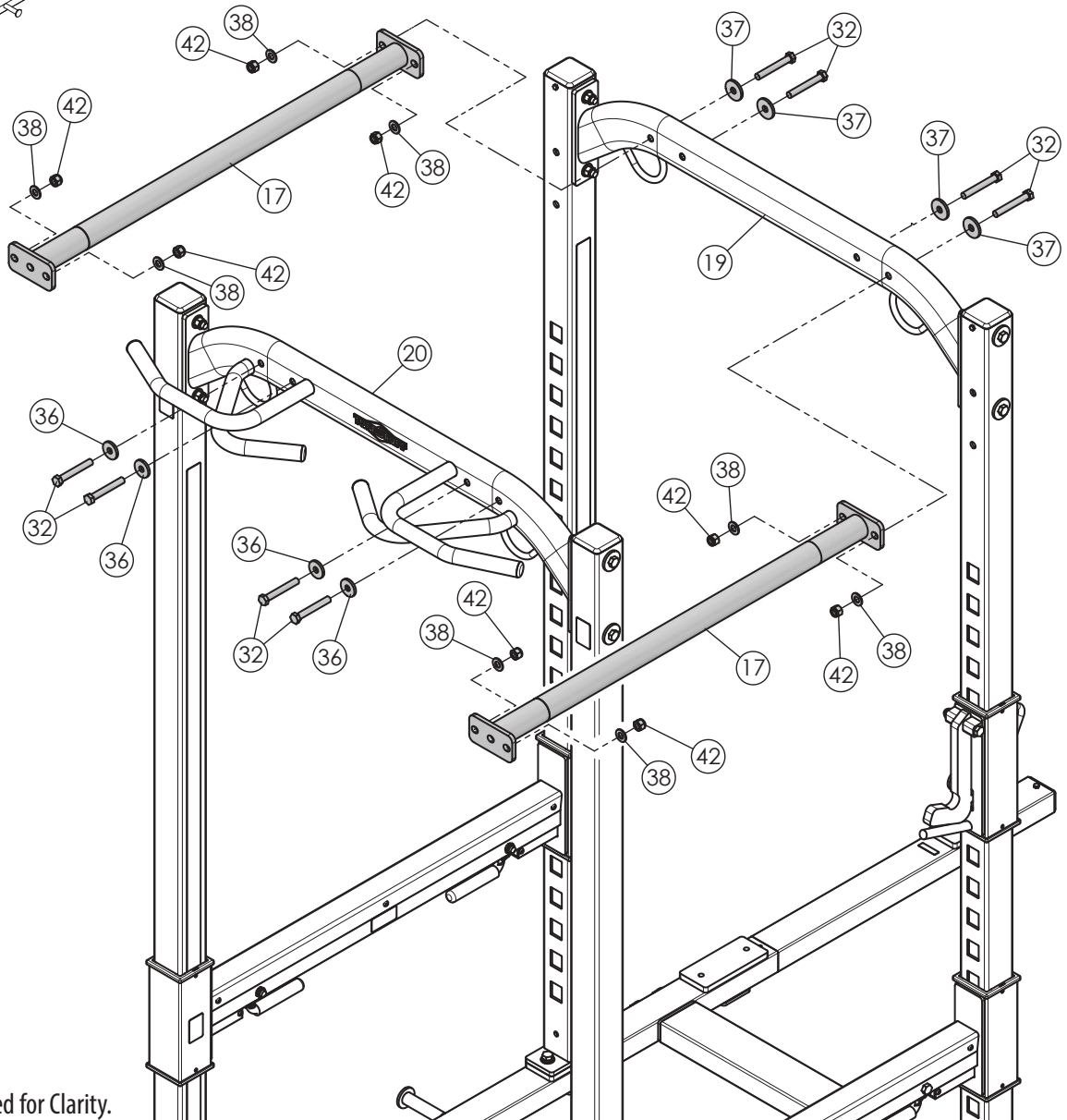
Step 8 Assembly List

Item #	Description	Qty.
17	TOP CHIN-UP BRACE 41" W/KNURLING	2
32	HEX HEAD CAP SCREW GR-5 Z/P 1/2-13 X 3 1/2	8
36	FLAT WASHER Z/P 1/2 X 1 1/2 X 3/16	4
37	FLAT WASHER Z/P 1/2 X 1 3/4 X 3/16	4
38	FLAT WASHER SAE Z/P 1/2"	8
42	NYLON INSERT LOCK NUT Z/P 1/2-13	8



Loosely Fasten

Finger tighten all hardware in this step. DO NOT wrench tighten. Some component(s) may need pre-assembly and alignment during the assembly process.



Note:

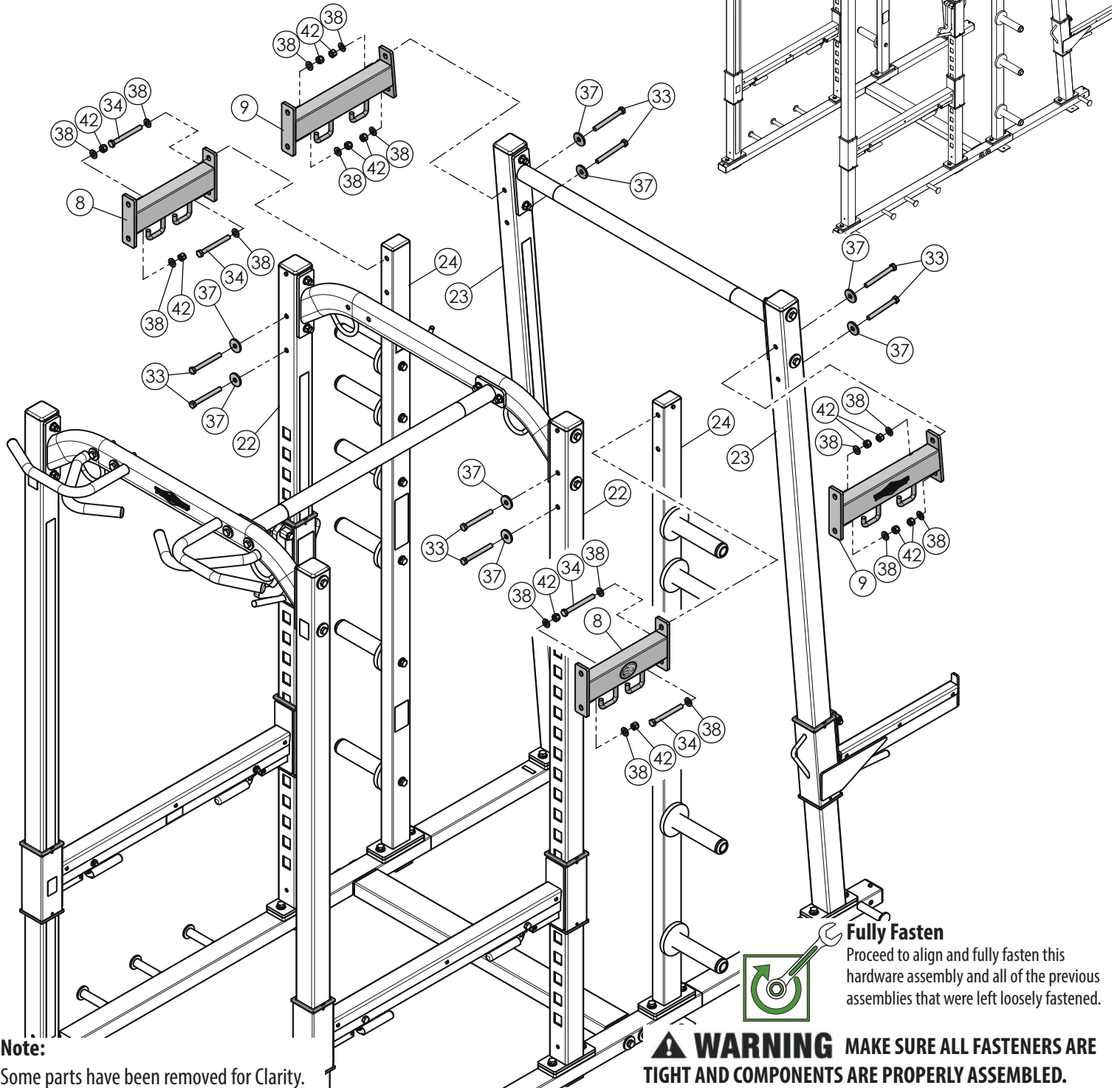
Some parts have been removed for clarity.

Assembly Step 9

Step 9 Assembly List

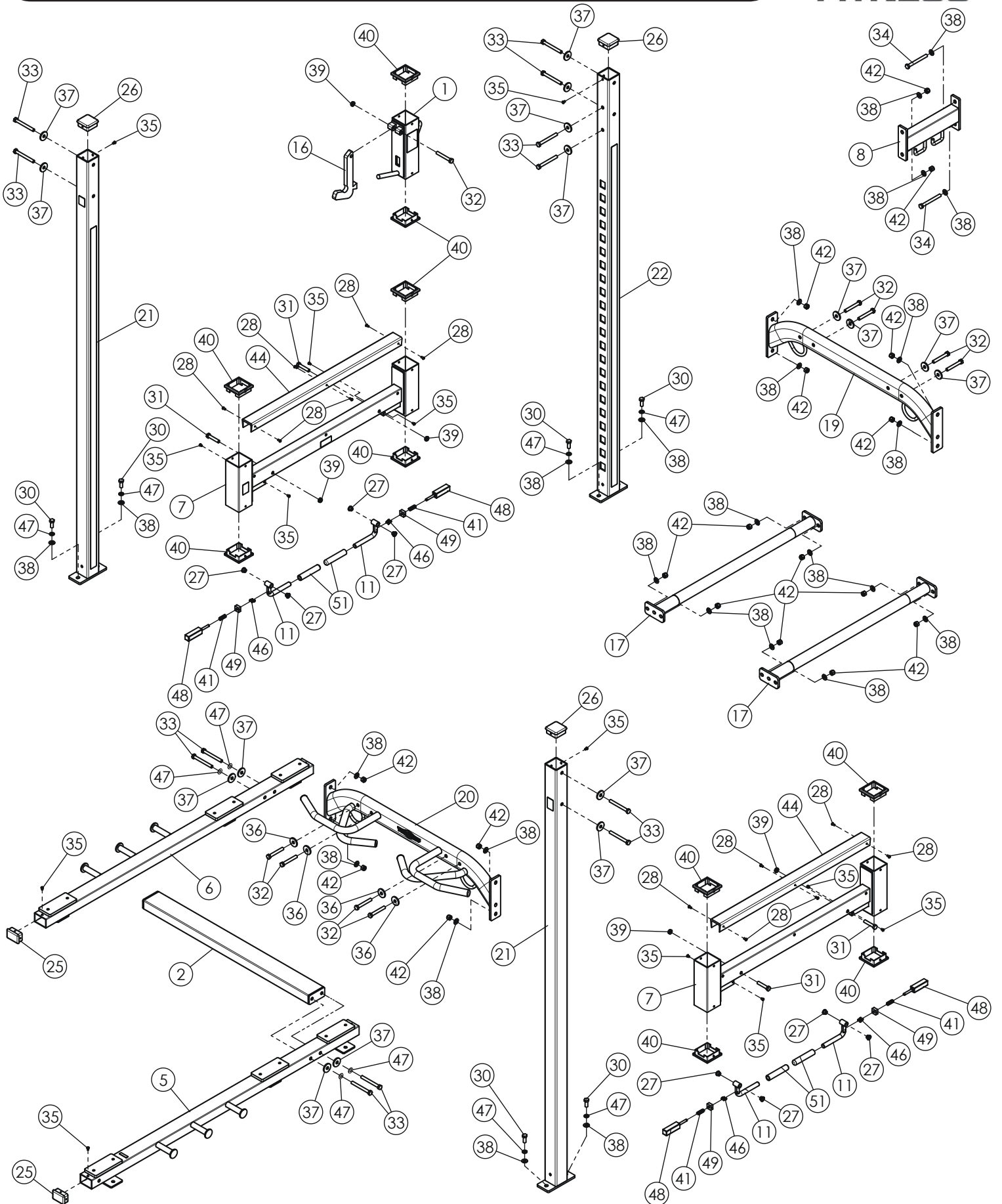
Item #	Description	Qty.
8	CROSS BRACE 14"	2
9	CROSS BRACE, SLANTED PLATE	2
33	HEX HEAD CAP SCREW GR-5 Z/P 1/2-13 X 4 1/2	8
34	HEX HEAD CAP SCREW GR-5 Z/P 1/2-13 X 4 3/4	4
37	FLAT WASHER Z/P 1/2 X 1 3/4 X 3/16	8
38	FLAT WASHER SAE Z/P 1/2"	16
42	NYLON INSERT LOCK NUT Z/P 1/2-13	16

Step 9 Assembled View

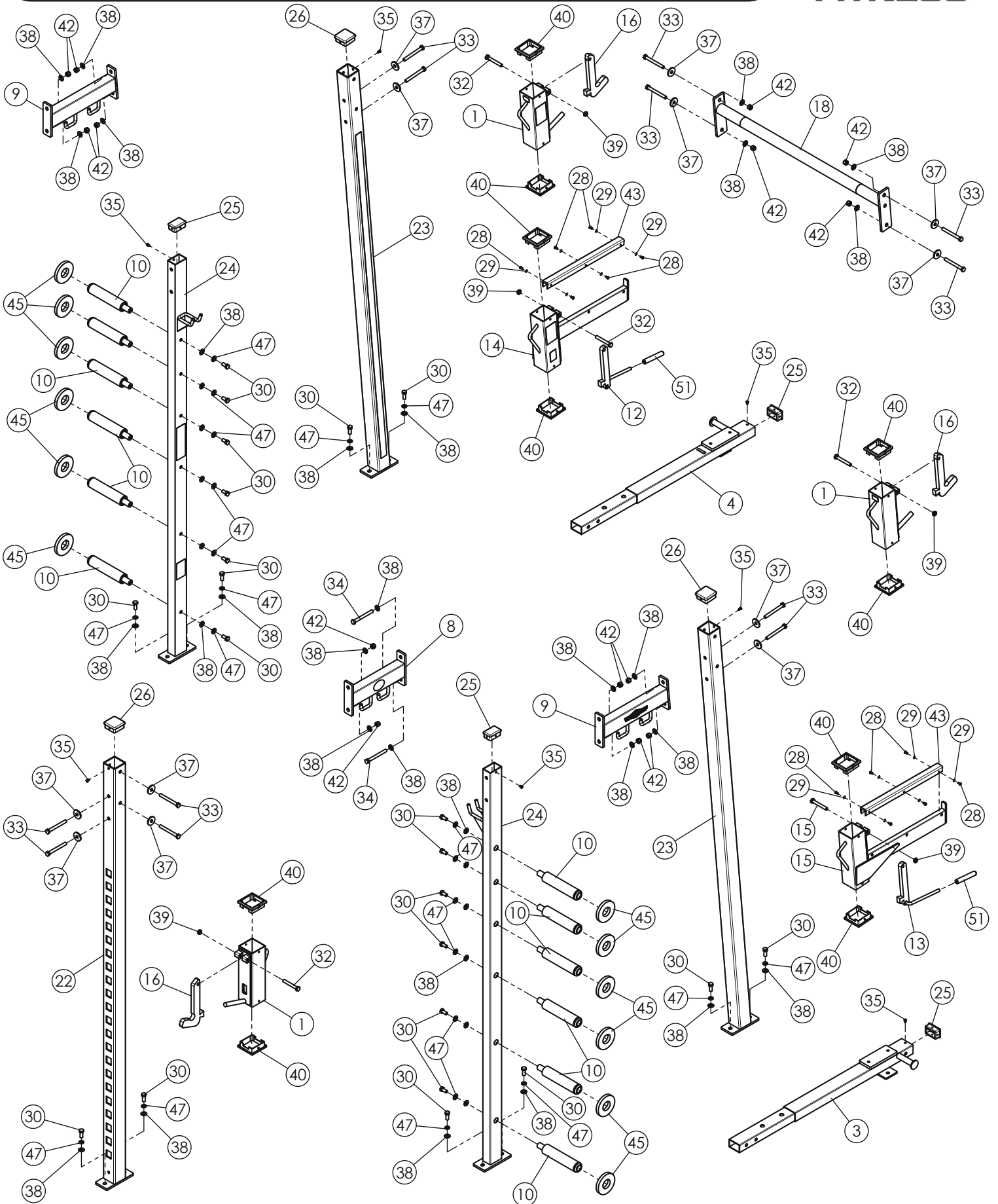


Note:
Some parts have been removed for clarity.

Exploded View Diagram



Exploded View Diagram



PXLS-7950 Parts List



ITEM	DESCRIPTION	REV	PART NO.	QTY
1	BAR-CATCH, SINGLE HOOK (PXLS-7950, 7930, 7910, 7900)	0	UP7601	4
2	BOTTOM CONNECTOR 43" (PXLS-7950, 7930, 7910)	0	UP7602	1
3	BOTTOM SIDE FRAME 44 3/4" LT (PXLS-7950, 7900)	0	UP7603	1
4	BOTTOM SIDE FRAME 44 3/4" RT (PXLS-7950, 7900)	0	UP7604	1
5	BOTTOM SIDE FRAME 69" LT (PXLS-7950, 7930)	0	UP7607	1
6	BOTTOM SIDE FRAME 69" RT (PXLS-7950, 7930)	0	UP7608	1
7	SAFETY BAR SPOTTER 43" (PXLS-7950, 7930)	0	UP7609	2
8	CROSS BRACE 14" (PXLS-7950, 7930)	0	UP7610	2
9	CROSS BRACE, SLANTED PLATE (PXLS-7950, 7900, 7910)	0	UP7611	2
10	OLYMPIC ADAPTER 1 X 8 (1 3/4 AXLE)	0	UP2595	12
11	RELEASE CARRIAGE HANDLE (PXLS-7950, 7930)	0	UP7625	4
12	RELEASE SAFETY SPOTTER HANDLE LT (PXLS-7950, 7910, 7900)	0	UP7626	1
13	RELEASE SAFETY SPOTTER HANDLE RT (PXLS-7950, 7910, 7900)	0	UP7627	1
14	SAFETY BAR SPOTTER LT (PXLS-7950, 7910, 7900)	0	UP7612	1
15	SAFETY BAR SPOTTER RT (PXLS-7950, 7910, 7900)	0	UP7613	1
16	SWING LOCK J-HOOK	0	UP7628	4
17	TOP CHIN-UP BRACE 41" W/KNURLING (PXLS-7950, 7930)	0	UP7614	2
18	TOP CHIN-UP BRACE 43" W/KNURLING (PXLS-7950, 7900)	0	UP7615	1
19	TOP CROSS BRACE 43" (PXLS-7950, 7930, 7910)	0	UP7616	1
20	TOP CROSS BRACE 43" W/HANDLES (PXLS-7950, 7930)	0	UP7617	1
21	UPRIGHT, FRONT (PXLS-7950, 7930)	0	UP7618	2
22	UPRIGHT, REAR (PXLS-7950, 7930)	0	UP7619	2
23	UPRIGHT, SLANTED 5 DEG (PXLS-7950, 7910, 7900)	0	UP7620	2
24	UPRIGHT, WEIGHT HOLDER (PXLS-7950, 7930, 7910)	0	UP7621	2
25	ALUMINUM INSERT CAP 2 X 3		BNH1504	6
26	ALUMINUM INSERT CAP 3 SQ X .188		BNH1506	6
27	BRONZE BUSHING 1/2 X 5/8 X 1/2 X 7/8 X 1/8		BNH0528	8
28	HPHILLIPS SELF-DRILLING TEK SCREWS Z/P #10 X 3/4		BNH4265	24
30	HEX HEAD CAP SCREW GR-5 Z/P 1/2-13 X 1 1/4		BNH2167	28
31	HEX HEAD CAP SCREW GR-5 Z/P 1/2-13 X 2 1/2		BNH2186	4
32	HEX HEAD CAP SCREW GR-5 Z/P 1/2-13 X 3 1/2		BNH2801	14
33	HEX HEAD CAP SCREW GR-5 Z/P 1/2-13 X 4 1/2		BNH2802	24
34	HEX HEAD CAP SCREW GR-5 Z/P 1/2-13 X 4 3/4		BNH2168	4
35	HEX HEAD CAP SCREW GR-5 Z/P 1/4-20 X 3/8		BNH2803	20
36	FLAT WASHER Z/P 1/2 ID X 1 1/2 OD X 3/16 THICK		BNH2805	4
37	FLAT WASHER Z/P 1/2 X 1 3/4 X 3/16		BNH2806	28
38	FLAT WASHER SAE Z/P 1/2"		BNH2031	68
39	NYLON INSERT THIN PATTERN LOCK NUT Z/P 1/2-13		BNH2027	12
40	PLASTIC TUBE GUIDE W/LIP-TEETH 3 1/2 X 3 1/2		BNH2874	20
41	PULL PIN STIFF SPRING 17/32 X 1 1/2 K-105SS		BNH0519	4
42	NYLON INSERT LOCK NUT Z/P 1/2-13		BNH2029	32



COMMERCIAL WARRANTY

This warranty applies only in the United States to the products manufactured or distributed by TuffStuff Fitness Equipment Inc. under the TUFFSTUFF brand name. TuffStuff warrants to the original purchaser that TuffStuff equipment will be free from defects in material and workmanship. All warranty periods begin to run from the date of purchase to the original purchaser. The warranty and remedies set forth herein are conditioned upon proper storage, installation, use and maintenance and conformance with any recommendations of TuffStuff. This warranty does not cover products not manufactured by TuffStuff or products which are altered without the express written consent of TuffStuff.

Commercial Warranty:

- Ten (10) Years:** Structural Main Frames, Welds, Cams and Weight Plates.
- Five (5) Years:** Pivot Bearings, Pulleys, Bushings, Guide Rods and Gas Shocks.
- One (1) Year:** Belts, Linear Bearings and Pull-Pin Components
All other parts not mentioned elsewhere in the warranty will expire from the date of purchase to the original purchaser.
- Six (6) Months:** Upholstery, Cables, Finish and Rubber Grips.

The obligation of TuffStuff under this warranty is limited to repairing or replacing warranted defective parts as TuffStuff may elect, at TuffStuff's facility in Chino, California without charge to the purchaser. Purchaser is responsible for installation of repaired or replaced parts, and all transportation and insurance costs on returned or replaced equipment to and from TuffStuff's facility in Chino.

THE FOREGOING SHALL CONSTITUTE THE SOLE REMEDY OF THE PURCHASER AND THE SOLE LIABILITY OF TUFFSTUFF WITH REGARD TO WARRANTY. NO IMPLIED STATUTORY WARRANTY OR IMPLIED STATUTORY WARRANTY OF MERCHANTABILITY OR FITNESS FOR A PARTICULAR PURPOSE SHALL APPLY. IN NO EVENT, WHETHER AS A RESULT OF BREACH OF CONTRACT, WARRANTY, NEGLIGENCE OR OTHERWISE, SHALL TUFFSTUFF BE LIABLE FOR SPECIAL, INCIDENTAL OR CONSEQUENTIAL DAMAGES INCLUDING, BUT NOT LIMITED TO, LOSS OF PROFITS OR REVENUE, LOSS OF USE OF EQUIPMENT, COST OF CAPITAL, COST OF SUBSTITUTION EQUIPMENT, DOWNTIME COST, OR CLAIMS OF CUSTOMERS OR PURCHASER FROM SUCH DAMAGE.

This written warranty is the final, complete and exclusive agreement of the parties with respect to the quality or performance of the equipment and no action for breach of this written warranty or any implied warranty shall be commenced more than one (1) year after the accrual of the cause of action. No modification of this warranty or waiver of its terms shall be binding on either party unless approved in writing by an authorized representative of the party. Contact TuffStuff Fitness Equipment Inc. at 13971 Norton Avenue, Chino, CA 91710, before returning any defective equipment.

This warranty gives you specific legal rights and you may also have other rights, which may vary from state to state.

SERIAL #

Write your Serial number here for future reference

Purchase Date



TuffStuff Fitness Equipment Inc.

13971 Norton Avenue, Chino, CA 91710, USA Phone: 909-629-1600 Fax: 909-629-4967
www.tuffstufffitness.com service@tuffstuff.net or service1@tuffstuff.net